



Motor Model Search



Motor Details

Model : 5KCR48UN0667AX

Catalog Number :

General:

Application : COMM EQUIP

Motor Category : COMPLETE MOTOR

Phases : 1

Of Speeds : 1

Replaces : 5KCR48UN0667X

Replaced By :

TestSpec # : 52X334356P1

Production Status : PROD

Horiz/Vertical : ANY

Stock Status : NONSTOCK

Product Name : N/R

Approved For Sale : Y

Base Mounting : RB

Restricted Flag : Y

DE Endshield : STD

First Customer : CARRIER

Customer Part # : HC54FB230

Nameplate Data :

Horsepower : 1.5

GE Type : KCR

RPM : 1725

Time Rating : CONT

Voltage : 208-230

NEMA Design :

FL Amps : 7.6-7.0

KVA Code : G

Enclosure : DP

Nominal Efficiency : 0

Frame : 56HZ

Min Guar. Efficiency : 0

Frequency : 60

Service Factor : 1

Insulation Class : B

Service Factor Amps : --

Ambient : 40

Alternate Service

Alternate Ambient : 0

Factor :

5 HC54FB230

Features :

UL Recognized : Y

CSA Approved :

Main Poles : 4

Other Poles :

Synch RPM : 1800

of Windings : 2

Start Device : SM

Insulation Treatment : SINGLE DIP

Thermal Protection : AUTO

UL Recognized

Aux. Cooling : N/R

Protection : Y

Class I Groups : N/R

Temp Code : N/R

PE Bearing : BALL

Class II Groups : N/R

PE Brg Size : 6203

OPE Bearing : BALL

PE Brg Style : DOUBLE SHIELD

OPE Brg Size :

PE Brg Part # : 113A617AA001

OPE Brg Style :

Bearing Grease : STD

OPE Brg Part # : UNAVAILABLE

Drip Cover : N

Water Slinger : N

Conduit Box Size : N/R

Drains : N

Rotation : ECW

Conduit Box Gasket : N

Color : N/R

Vibration : .0015

Finish : N/R

Diagrams and Dimensions :

Outline Drawing : 52A111635P1

C-Dimension : 13.41

GEM Print :

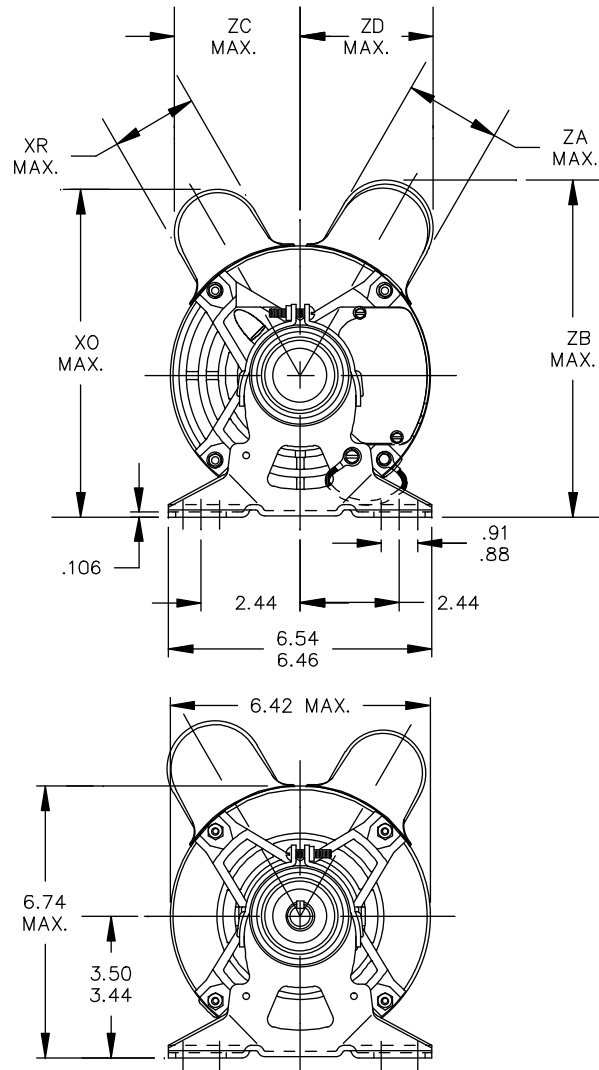
Weight (lb) : 40

PE Shaft Ext'n : .625 X 2.63 - .188 X .188
KEY

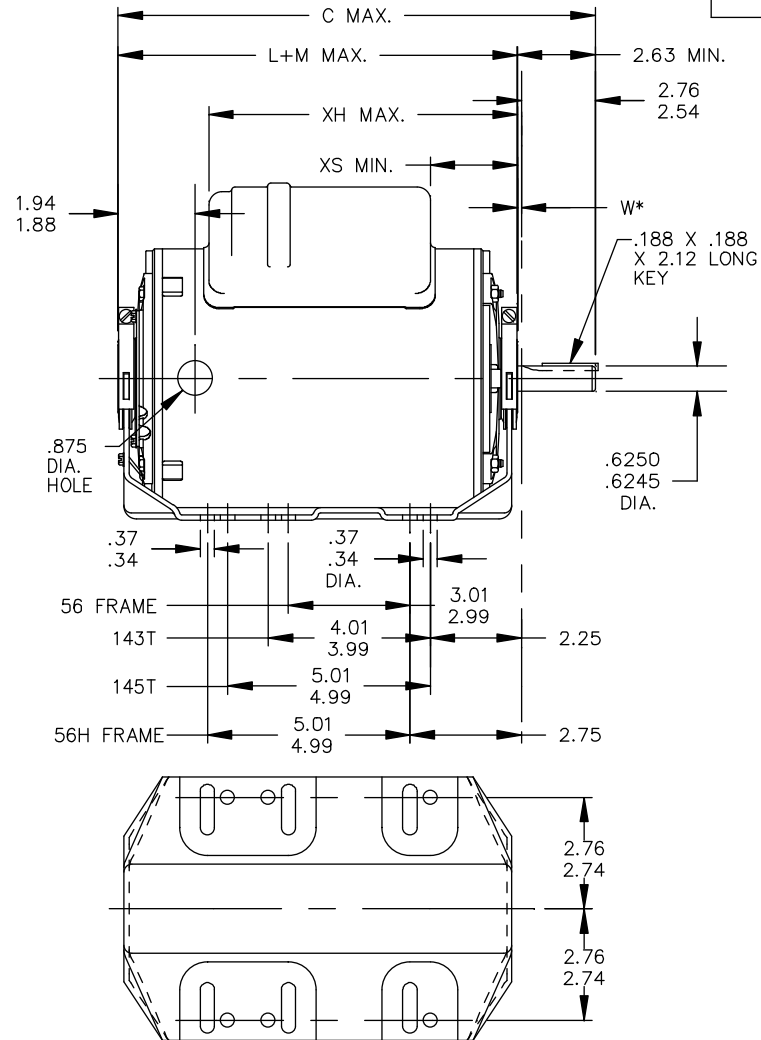
OPE Shaft Ext'n : N/R

Connection Diagram : 52A105379DR

Notes :



VIEW OF P.E. ENDSHIELD



W* IS A VARIABLE CLEARANCE DUE TO VARIATIONS IN PARTS AND ASSEMBLY.

I	KCR	48	56HZ	13.30	10.76	7.76	8.18	2.15	2.01	1.60	7.81	3.12	3.10	8.43
P	TYPE	RBC SIZE	NEMA FR	C	L+M	XH	XO	XR	XS	ZA	ZB	ZC	ZD	MIN. SHELL

TOLERANCES UNLESS SPECIFIED

DEC. INCHES

.X ±.1

.XX ±.03

.XXX ±.005

.XXXX ±.0005

ANG ±1/2'



REGAL-BELOIT CORPORATION

TITLE OUTLINE
40 FR. REDESIGN - GENERAL PURPOSE MOTOR

MAT'L.

FINISH

DRAWN	DR 10/26/04
CHK	DR 10/26/04
APPD	
SCALE	3=8
REF	
FMF	
PREV	

3	UPDATED AS PER MU114726	UD 08/19/13	KK
2	ADD GD. LD VIEW PER BOM PER DS11-2807	BS 09/19/11	
NO.	REVISION	BY & DATE	CHK

THIS DRAWING IN DESIGN AND DETAIL IS OUR PROPERTY AND MUST NOT BE USED EXCEPT IN CONNECTION WITH OUR WORK ALL RIGHTS OF DESIGN AND INVENTION ARE RESERVED THIS IS AN ELECTRONICALLY GENERATED DOCUMENT - DO NOT SCALE THIS PRINT

RFP	CAD FILE	52A111635	SIZE	DRAWING NO.	REV.
DIST			A	52A111635	3



Motor Model Search

Winding and Test Specification

WTS # 52X334356P1

Comments : MN&STRES WAS 0.97/0.87&5.06/4.60 CHG PR IS11-4171

Engineering Data

Frame	40		
Motor Type	KCR		
Air Gap	.0131		
Stack	3.50 (U)		
Wdg. Diag.	52B201574	Skew	
Spl. Insul.	No	Max Space Factor	50.3

WTS Nameplate Data

Horsepower	1.5	RPM	1725
Voltage	208-230	Amps	7.6-7
Frequency	60	Phases	1
Run Capacitor	20pfd	Cap Volts	370
Start Capacitor	208pfd	Cap Volts	110
		LR Code	G
Service Factor 1	1	Amps	
Service Factor 2	1.15	Amps	9-8
Service Factor 3		Amps	

Winding Characteristics

Winding	Poles	N1e	Strands	Size	Wire Spec	Shift	Turns	Resistance			Tap Between	LR Curr Density
								Weight	Min	Max		
Main	4	32.34	1	0.0453	B22M47L1		(10 14 14)	1.14	0.89	0.99		
X Main	4	32.34	1	0.0453	B22M47L1	0	(10 14 14)	1.14	0.89	0.99		
Y Main												
Z Main												
W Main												
Start	4	72.92	1	0.0285	B22M47L1	90	(25 37 38)(25 37)	.93	4.77	5.27		

Noload Performance Data

	Amps		Watts		RPM	Cap. Volts
	Nominal	Max	Nominal	Max	Nominal	
High	2.90	3.40	170	210	1795	
Med. High						
Medium						
Med. Low						
Low						

Locked Rotor

	Amps		Watts		Torque	Cap. Volts
	Nominal	Max	Nominal	Min	Nominal	
High	37.00	40.00	6696	6026	116.0	
Med. High						
Medium						
Med. Low						
Low						

Max. Torque

	RPM	Torque	
		Min	Nominal
High	1475	140.0	150.0
Med. High			
Medium			
Med. Low			
Low			

Full Load Performance

	Amps		Watts		Speed	Torque	Efficiency
	Nominal	Max	Nominal	Max	Nominal	Nominal	Nominal
High	6.9	7.3	1425	1475	1730	73.1	78.8
Med. High							
Medium							
Med. Low							
Low							

Customer/Special Load Points

	Torque	Speed	Watts		Amps	
	Nominal	Nominal	Nominal	Max	Nominal	Max
High	73.1	1730	6700	7370		
Med. High						
Medium						
Med. Low						
Low						

Test Volts: 230
 Test Frequency: 60
 Low Speed Start Volts: 0

Line Resistance

Volts	Min	Nominal	Max
230	1.78	1.88	1.98